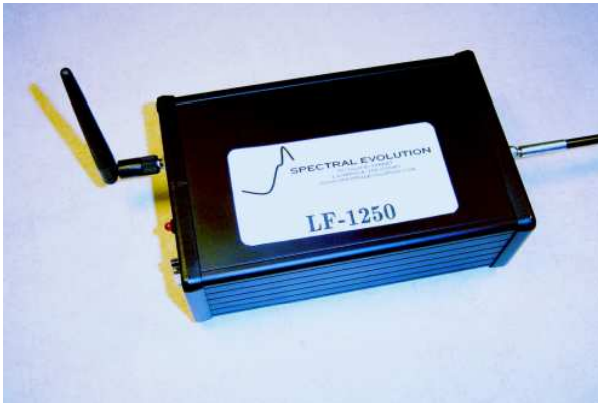


# LF-1250

## Direct Optically Coupled or Fiber Optic InGaAs PDA Spectrometer



### Features:

- Solid State Construction with No Moving Parts provides stable spectral calibration
- Fast Scanning
- On Board Calibration Storage
- Flexible Communication Interfaces
- Stable, cooled PDA or uncooled for low power consumption
- Fast F2 optical system matched to fiber
- ARM7DTMI embedded CPU
- On Board Scan Averaging
- Meets USP 1119 performance

### Applications:

- Spectroscopy
- Water/Moisture Analysis
- Process Monitoring
- Refining
- Petrochemicals
- Food
- Polymers
- Spectroradiometry
- Environmental

The **LF-1250** is a versatile fiber optic input NIR Spectrometer. The fiber input allows users a variety of sample interfacing configurations. The optical system is matched to the fiber optic for maximum throughput, providing optimum signal to noise ratio. The unit utilizes a stable 128, 256 or 512 element, multiplexed InGaAs Array, offering a range of spectral resolution options. A high quality optical system meets performance requirements for applications in this spectral region. Cooled or uncooled array options offer performance/power tradeoffs. The stability meets even the toughest measurement scenarios. Bluetooth communication allows wireless interfacing.

The **LF-1250** comes in a standard bench package. Ruggedized packaging is offered for OEM applications. Other array and spectral range/resolution configurations are also available.



*When Performance Matters...*

<http://www.spectralevolution.com>

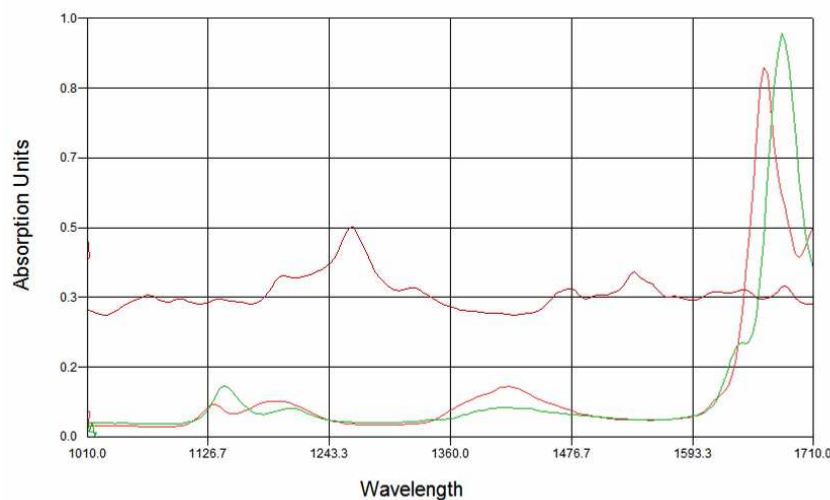
# LF-1250

## Specifications – LF1250 – 256C

Spectral Range	900 - 1700 nm
Spectral Resolution	8 nm
Spectrometer Type	Fiber Optic Input
Slit	100 um
Detector Type	256 element InGaAs Array
A/D Converter	16 bit
Wavelength Reproducibility	.1 nm
Wavelength Accuracy	.5 nm
Photometric Range	0 - 3 AU
Photometric Reproducibility	< 0.00005 AU
Photometric Noise	< 0.00002 AU RMS
Photometric Accuracy	+/- 0.001 AU
Stray Light	0.10%
Integration Time	5 - 1000 ms
Power	6 V, 3 W
Size	4" x 2" x 6.5"
Weight	< 3 lbs
Interface	RS-232, USB, Bluetooth, 802.11b options

\* Custom configurations available

\*\* Specifications subject to change without notice



**SPECTRAL EVOLUTION**

58 Beechwood Drive  
North Andover, MA 01845  
Tel: 978 687-1833 Fax: 978 945-0372  
Email: sales@spectralevolution.com

<http://www.spectralevolution.com>